

## NERC science benefits people, economies and the environment across the UK

Our science delivers real benefits in every region of the country by providing solutions that inform action, build resilience and foster a healthy environment and economy<sup>1</sup>.

### Why it matters

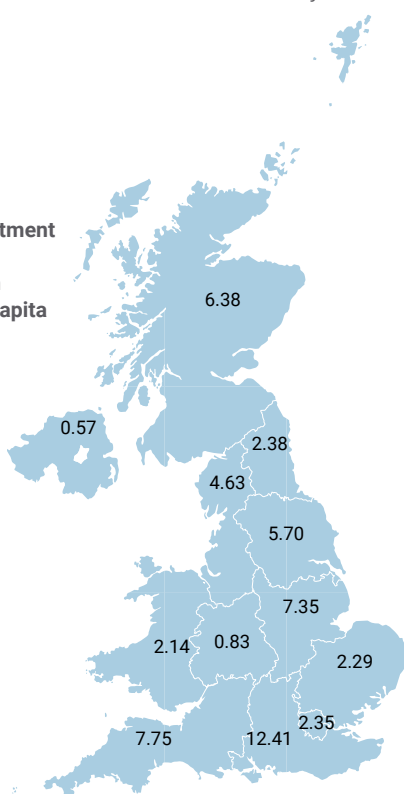
Boosting the UK economy means unlocking the full potential of every region in the country. The government recognises the key role of research and institutional strengths in creating productive and resilient local economies.

### What we did

NERC invests in outstanding research and innovation throughout the UK (see map below). Our work with business, government and wider society delivers solutions that help inform action, build resilience and foster a healthy environment and economy.

The benefits are felt in every corner of the country. Real economic and environmental benefits that boost real lives – it's a story of success summarised in the map below and the accompanying case studies (overleaf).

Map 1: NERC investment in universities and research centres in UK regions. £ per capita (2018-19).



Map 2: Dots show a selection of locations where NERC science has delivered benefits to the local area.



### NERC's impact in numbers

**75%**

boost in profits at the port of Falmouth, Cornwall

**90%**

saving in flood defence costs at Belford, Northumberland

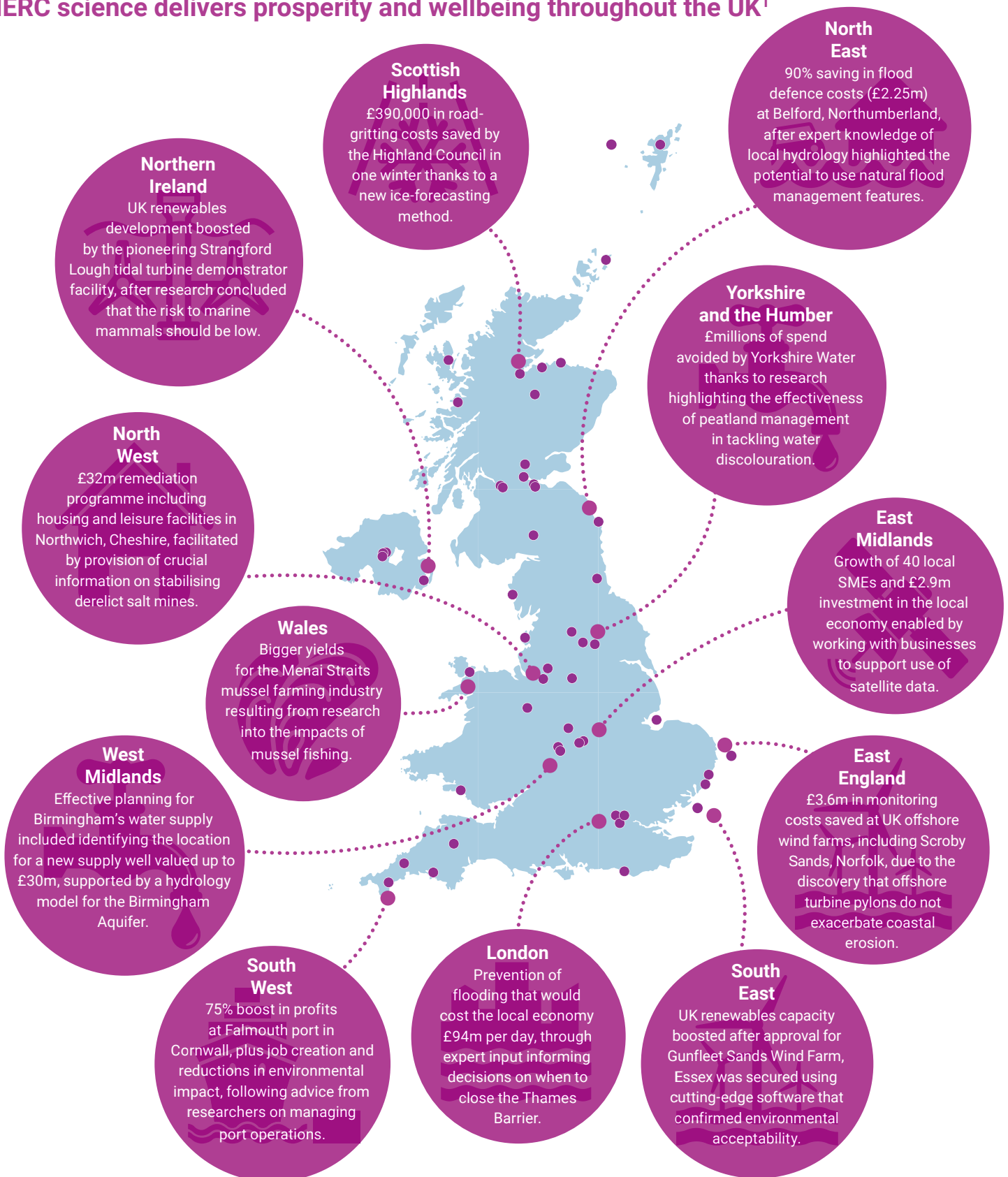
**£78.6 million**

increase per annum from Scottish fish farms

Contributing to the UN Sustainable Development Goals



# NERC science delivers prosperity and wellbeing throughout the UK<sup>1</sup>



## Investing for the future

We invest in infrastructure, people, research and innovation across the UK, delivering opportunities for place-based environmental solutions. The Regional Impact from Science of the Environment (RISE), for example, is a £12m programme driving regional economic development by bringing together research organisations, businesses, policymakers and the third sector. Four projects have been funded to date, in the South West, Yorkshire, West Midlands and London/South East.

1 For more detail, see pages 30-31 of NERC Impact Report 2017, available at: <http://tiny.cc/37b4jz>