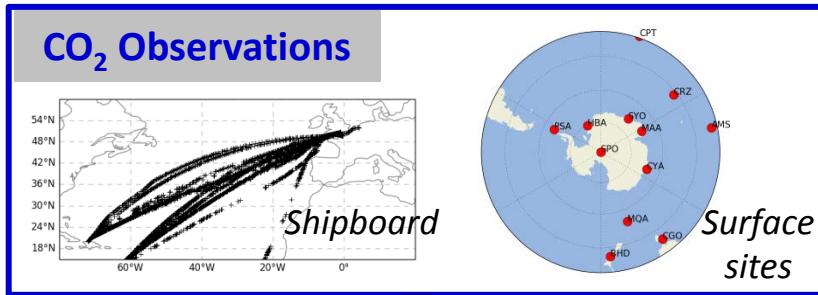
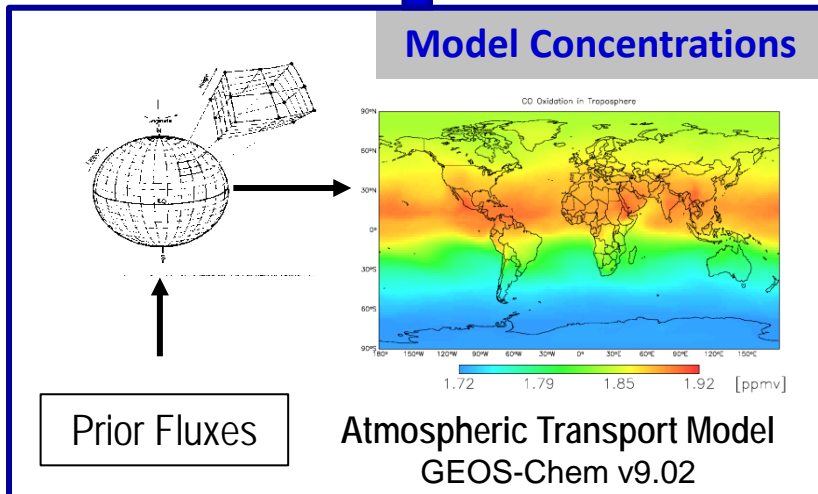
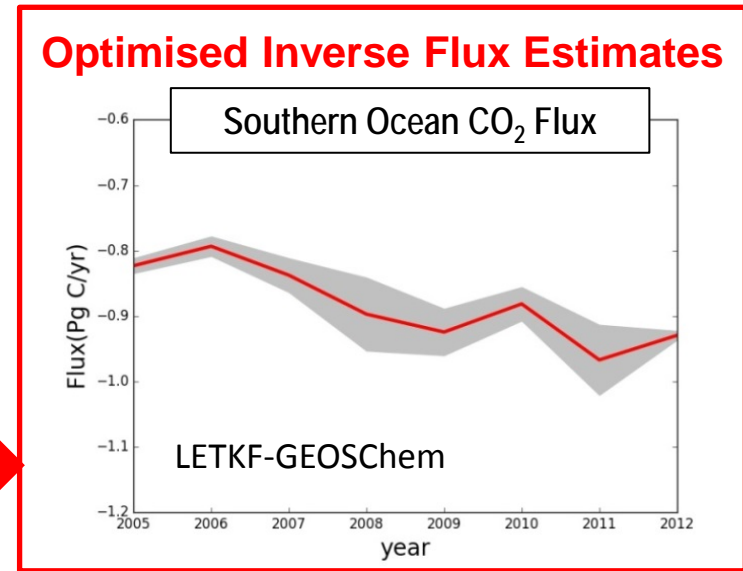


Air-Sea Carbon Fluxes from Atmospheric Inverse Analyses

Parv Suntharalingam, Zhaohui Chen, David Buchanan; (P.Suntharalingam@uea.ac.uk)



INVERSE MODEL
LETKF-GEOSChem
Local Ensemble Transform Kalman Filter



- ### RELEVANT PROJECTS AND PUBLICATIONS
- Inverse estimates of North Atlantic CO₂ Fluxes (*for NERC-RAGNARoCC*)
 - Optimal atmospheric CO₂ sampling strategies to quantify Southern Ocean CO₂ Fluxes (*studentship collaboration with BAS*)
 - Process-understanding of ocean CO₂ fluxes via atmospheric O₂ and N₂O measurements (*UEA studentship*)
 - *Suntharalingam et al 2005,2008; Chen et al. 2013; Chen et al. in prep.; Nassar et al. 2011*