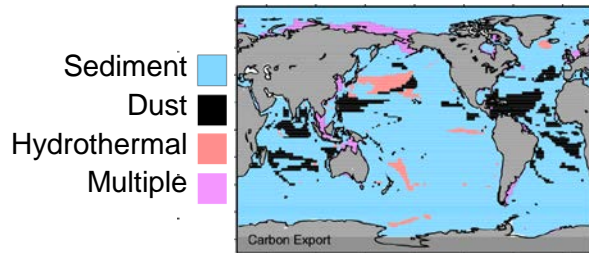
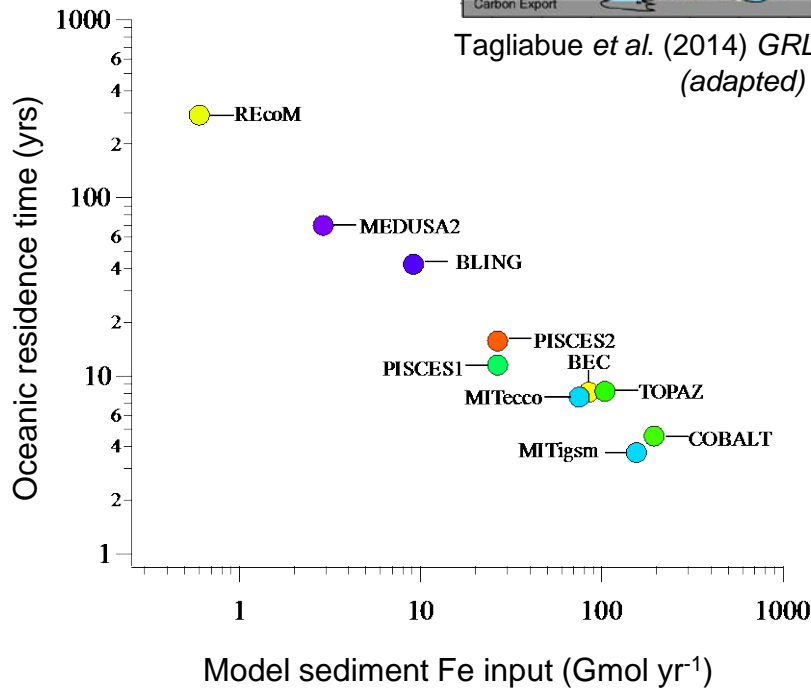


KEY ROLE FOR IRON, MISSING SOURCES

Source impact on C export:

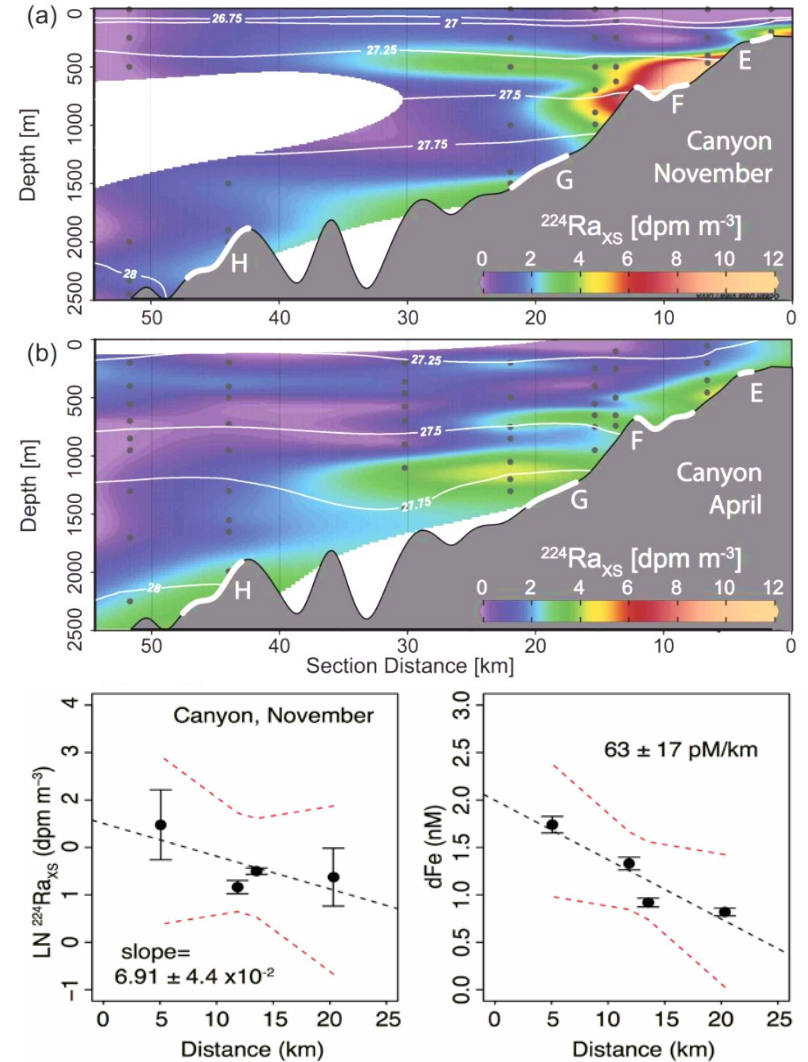


Tagliabue *et al.* (2014) *GRL* (adapted)



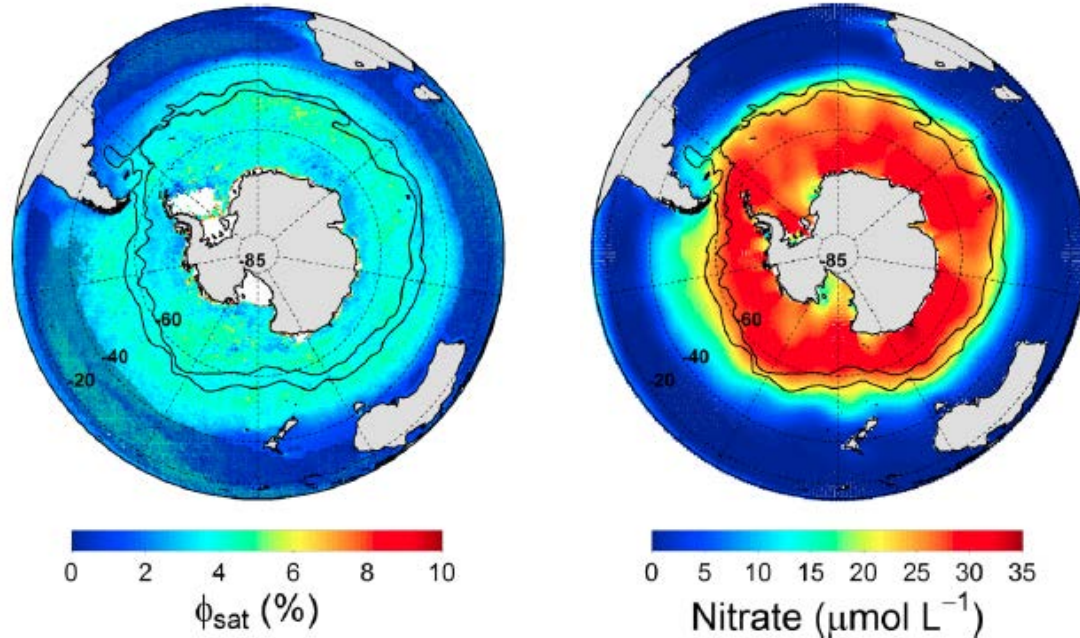
Homoky *et al.* (In Press) *Phil. Trans. Roy. Soc. A*

RADIOISOTOPE QUANTIFICATION OF CONTINENT-OCEAN SUPPLY



Annett... Homoky, *et al.* (in review) *Nat. Geosci.*

NUTRIENT STRESS IN THE SOUTH ATLANTIC AND SOUTHERN OCEAN USING SATELLITE CHLOROPHYLL FLUORESCENCE



Browning, **Bouman** & Moore 2014,
Global Biogeochem. Cycles

Expertise: Modelling and measurement of marine primary production, assessing light versus nutrient limitation of natural phytoplankton, HPLC pigment markers of key taxa, marine bio-optics, ocean-colour remote sensing